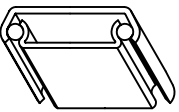
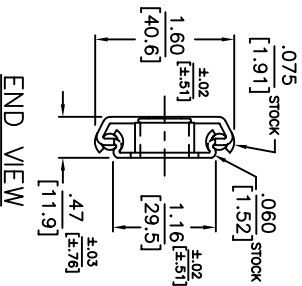


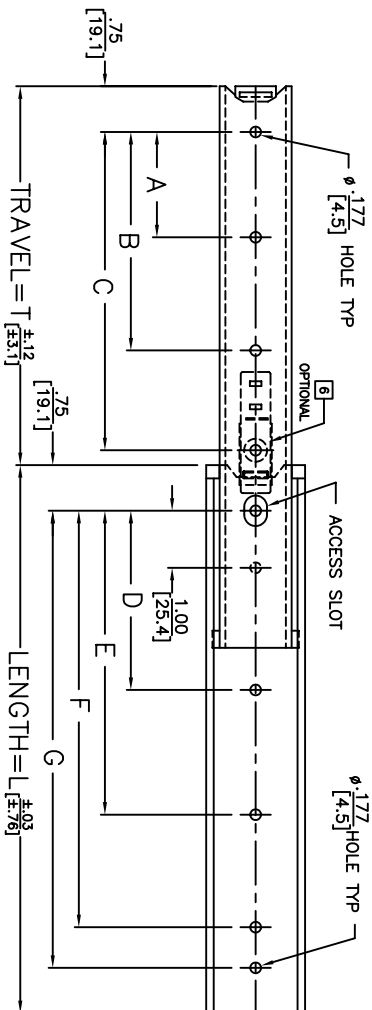
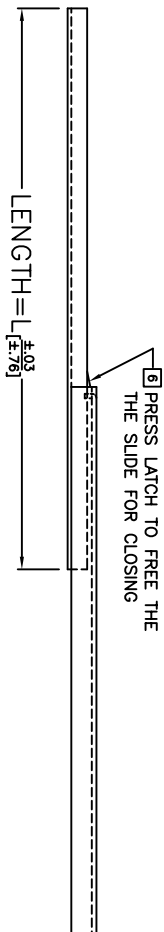
- NOTE:**
- 311 - SLIDE WITHOUT LOCK
 - 311L - SLIDE WITH LOCK OPEN
 - 1. SLIDE IS SYMMETRICAL. MAY BE USED AS LEFT OR RIGHT HAND SLIDE.
 - 2. HOLES OTHER THAN SHOWN MAY BE IN THE SLIDE MEMBERS AT JONATHAN OPTION.
 - 3. FOR ELY/REIN. BRACKETS, SEE SEPARATE SECTION.
 - 4. NON METALLIC STOPS OPEN AND CLOSED.
 - 5. USE NUMBER 8 PAN OR BINDING HEAD SCREWS FOR MOUNTING THRU THE SLIDE MEMBERS.
 - 6 SLIDE IS PROVIDED WITH LOCK OPEN (OPTIONAL).



ISOMETRIC REPRESENTATION



END VIEW



PART NO.	SLIDE LENGTH DIM.	SLIDE TRAVEL DIM.	MOUNTING HOLE PATTERN							LOAD RATING PER PAIR
			A	B	C	D	E	F	G	
311-12	12	8	2.500	4.500	7.000	4.000	6.500	9.500	10.500	125 LBS
311L-12	304.8	203	63.50	114.30	177.80	101.60	165.10	241.30	266.70	57 KG
311-14	14	9.5	3.000	5.500	8.500	4.000	8.500	11.500	12.500	120 LBS
311L-14	355.6	241	76.20	139.70	215.90	101.60	215.90	292.10	317.50	55 KG
311-16	16	10.5	3.000	6.500	9.500	5.000	9.500	13.500	14.500	115 LBS
311L-16	406.4	267	76.20	165.10	241.30	127.00	241.30	342.90	368.30	52 KG
311-18	18	12	4.000	7.000	11.000	6.000	10.500	15.500	16.500	110 LBS
311L-18	457.2	305	101.60	177.80	279.40	152.40	266.70	393.70	419.10	50 KG
311-20	20	13.5	4.000	8.500	12.500	6.000	12.500	17.500	18.500	105 LBS
311L-20	508	343	101.60	215.90	317.50	152.40	317.50	444.50	469.90	48 KG
311-22	22	15	5.000	9.000	14.000	7.000	13.500	19.500	20.500	100 LBS
311L-22	558.8	381	127.00	228.60	355.60	177.80	342.90	495.30	520.70	45 KG
311-24	24	16	5.000	10.000	15.000	7.500	15.000	21.500	22.500	90 LBS
311L-24	609.6	406	127.00	254.00	381.00	190.50	381.00	546.10	571.50	41 KG
311-26	26	17.5	5.000	11.500	16.500	8.000	16.500	23.500	24.500	80 LBS
311L-26	660.4	445	127.00	292.10	419.10	203.20	419.10	596.90	622.30	36 KG
311-28	28	19	6.000	12.000	18.000	9.000	17.500	25.500	26.500	70 LBS
311L-28	711.2	483	152.40	304.80	457.20	228.60	444.50	647.70	673.10	32 KG



Irvine Technology Center
410 Exchange, Suite 200
Irvine, CA 92602
Tel: (714) 665-4400
Website: www.jonathanEng.com
Engineering • Production • Integration / Subassembly • Logistics
United States • Mexico • China • Taiwan

DIMENSIONS SHOWN UNLESS OTHERWISE NOTED		PART NO. 311/311L		DESCRIPTION: STEEL	
AS: [IN]	TOLERANCE	DATE: 6/04	LOAD RATING: 70-125 LBS. / 32-57 KG.		
XX	±.020	COPYRIGHT © 2004 JONATHAN ENGINEERED SOLUTIONS			
X	±.51				
XXX	±.010				
XX	±.25				
ANGLES	±1°				