

1

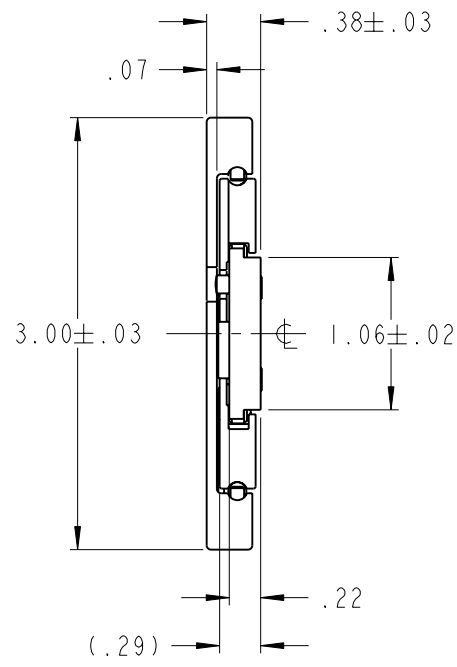
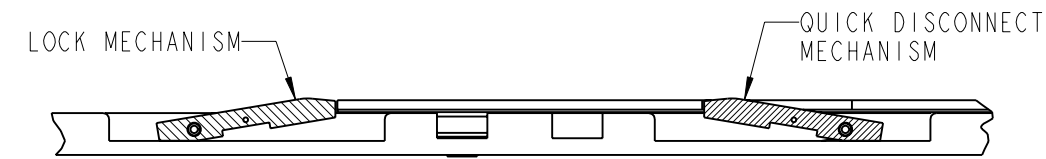
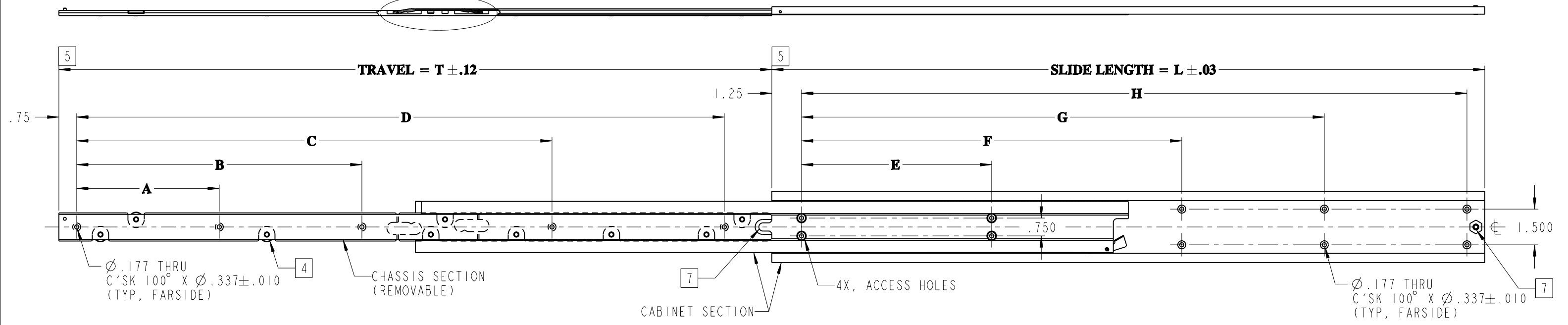
2

3

4

5

SEE DETAIL A



9. LEFT HAND SLIDE SHOWN. RIGHT HAND SLIDE OPPOSITE.
8. USE #8 100° FLAT HEAD MACHINE SCREWS FOR MOUNTING THRU THE SLIDE MEMBERS.
7. SLIDE FEATURES AN ADJUSTABLE REAR SHOCKBLOCK.
6. CABINET SECTION OR CHASSIS SECTION MAY BE PURCHASED SEPARATELY AND ARE INTERCHANGEABLE.
5. FOR REFERENCE PURPOSE ONLY, THESE SURFACES TO ALIGN WHEN SLIDE IS IN CLOSED POSITION.
4. AMOUNT AND LOCATION OF BALL BEARING ROLLERS DETERMINED BY JONATHAN ENGINEERED SOLUTIONS.
3. SLIDE LOCKS IN FULL OPEN POSITION AND IS PROVIDED WITH QUICK DISCONNECT OF CHASSIS SECTION.
2. FINISH: SLIDE CHANNELS AND ALUMINUM COMPONENTS ARE ANODIZED PER MIL-A-8625, TYPE II, CLASS I. CRES COMPONENTS ARE PASSIVATED PER SAE-AMS-QQ-P-35.
1. MATERIAL: SLIDE CHANNELS ARE FABRICATED FROM ALUMINUM ALLOY 7075-T6. COMPONENT PARTS ARE 302/303 CRES AND HIGH STRENGTH ALUMINUM. BALL BEARINGS ARE 440 CRES.

PART NO.	SLIDE LENGTH	SLIDE TRAVEL	CHASSIS SECTION				CABINET SECTION				LOAD RATING PER PAIR
			A	B	C	D	E	F	G	H	
138QDA-10	10.00	10.00	2.750	-	-	7.625	-	-	5.000	8.000	170 LBS
138QDA-12	12.00	12.00	3.750	-	-	9.500	-	-	6.000	10.000	181 LBS
138QDA-14	14.00	14.00	4.000	-	9.750	11.250	-	-	7.000	12.000	174 LBS
138QDA-16	16.00	16.00	4.500	-	11.000	13.250	4.000	8.000	11.000	14.000	162 LBS
138QDA-18	18.00	18.00	5.500	-	12.000	15.250	5.000	10.000	13.000	16.000	154 LBS
138QDA-20	20.00	20.00	4.000	7.000	14.000	17.250	5.000	10.000	14.000	18.000	147 LBS
138QDA-22	22.00	22.00	4.000	8.000	15.000	19.250	6.000	12.000	16.000	20.000	140 LBS
138QDA-24	24.00	24.00	5.000	9.000	16.500	21.250	6.000	12.000	17.000	22.000	134 LBS
138QDA-26	26.00	26.00	5.500	9.500	17.500	23.250	7.000	14.000	19.000	24.000	130 LBS
138QDA-28	28.00	28.00	5.500	10.000	18.750	25.250	7.000	14.000	20.000	26.000	128 LBS
138QDA-30	30.00	30.00	6.000	12.000	20.000	27.250	8.000	16.000	22.000	28.000	116 LBS

JONATHAN
Engineered Solutions

Irvine Technology Center
410 Exchange, Suite 200
Irvine, CA 92602
Tel. (714) 665-4400
Fax: (714) 368-7002
Website: www.jonathanengr.com
Engineer - Production - Integration/ Subassembly - Logistics
United States - Mexico - China - Taiwan

TOLERANCES UNLESS OTHERWISE NOTED				PART NUMBER : 138QDA		DESCRIPTION : ALUMINUM SERIES 138QDA LOAD RATING : 116-170 LBS.
.XX	.XXX	ANGLES	HOLES	DATE : 05/14/09		
± .01	± .005	± 1°	± .005			
SHEET 1 OF 1				COPYRIGHT © 2009 JONATHAN ENGINEERED SOLUTIONS		

1

2

3

4

5