

6 FOR REFERENCE PURPOSE ONLY, THESE SURFACES TO ALIGN WHEN SLIDE IS IN CLOSED POSITION.

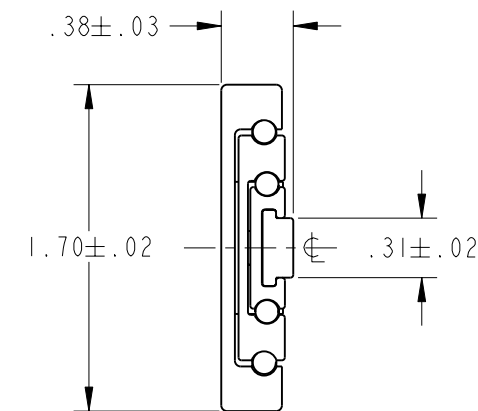
5. SLIDE IS SYMMETRICAL, MAY BE USED AS LEFT-HAND OR RIGHT-HAND MOUNTING UNIT.

4 CHASSIS SECTION MUST PULL OUT .22" FOR LOCK OPEN TO ENGAGE.

3. SLIDE LOCKS IN FULL OPEN POSITION AND IS PROVIDED WITH QUICK DISCONNECT OF CHASSIS SECTION.

2. FINISH: SLIDE CHANNELS AND ALUMINUM COMPONENTS ARE ANODIZED PER MIL-A-8625, TYPE II, CLASS I. CRES COMPONENTS ARE PASSIVATED PER SAE-AMS-QQ-P-35.

1. MATERIAL: SLIDE CHANNELS ARE FABRICATED FROM ALUMINUM ALLOY 7075-T6. COMPONENT PARTS ARE 302/303 CRES AND HIGH STRENGTH ALUMINUM. BALL BEARINGS ARE 440 CRES.



END VIEW

PART NO.	SLIDE LENGTH	SLIDE TRAVEL	CABINET SECTION								CHASSIS SECTION						LOAD RATING - PER PAIR	
			L	T	A	B	C	D	E	F	G	H	J	K	M	N		R
170T-10	10	10	4.000	-	6.000	-	-	-	-	8.250	3.500	-	-	-	-	-	5.500	135 lbs
170T-12	12	12	4.000	-	8.000	-	-	-	-	10.250	3.500	-	-	5.500	-	-	7.500	130 lbs
170T-14	14	14	5.500	-	10.000	-	-	-	-	12.250	3.500	-	5.000	8.000	-	-	9.500	125 lbs
170T-16	16	16	5.500	-	9.750	12.000	-	-	-	14.250	3.500	-	5.000	9.000	-	-	11.500	120 lbs
170T-18	18	18	5.500	-	9.500	11.750	14.000	-	-	16.250	3.500	-	5.000	8.500	-	11.000	13.500	115 lbs
170T-20	20	20	5.500	-	11.500	13.750	16.000	-	-	18.250	3.500	-	5.000	8.500	-	11.000	15.500	110 lbs
170T-22	22	22	5.500	-	13.500	15.750	18.000	-	-	20.250	3.500	5.000	7.500	11.500	14.000	-	17.500	105 lbs
170T-24	24	24	5.500	-	13.250	15.500	17.750	20.000	-	22.250	3.500	5.000	7.500	11.000	13.500	16.000	19.500	100 lbs
170T-26	26	26	5.500	11.250	15.250	17.500	19.750	22.000	-	24.250	3.500	5.000	7.500	13.000	15.500	18.000	21.500	95 lbs
170T-28	28	28	5.500	13.250	17.250	19.500	21.750	24.000	-	26.250	3.500	5.000	8.500	15.000	17.500	20.000	23.500	90 lbs
170T-30	30	30	5.500	14.250	19.250	21.500	23.750	26.000	-	28.250	3.500	5.000	9.500	17.000	19.500	22.000	25.500	80 lbs



Irvine Technology Center
410 Exchange, Suite 200
Irvine, CA 92602
Tel. (714) 665-4400
Fax: (714) 368-7002
Website: www.jonathanengr.com
Engineer - Production - Integration/ Subassembly - Logistics
United States - Mexico - China - Taiwan

TOLERANCES UNLESS OTHERWISE NOTED

PART NUMBER :
170T

DESCRIPTION :

ALUMINUM 170T
LOAD RATING : 80-135 lbs

DATE :
06/01/09

SHEET 1 OF 1

COPYRIGHT © 2009 JONATHAN ENGINEERED SOLUTIONS