

1

2

3

4

5

A

A

B

B

C

C

D

D

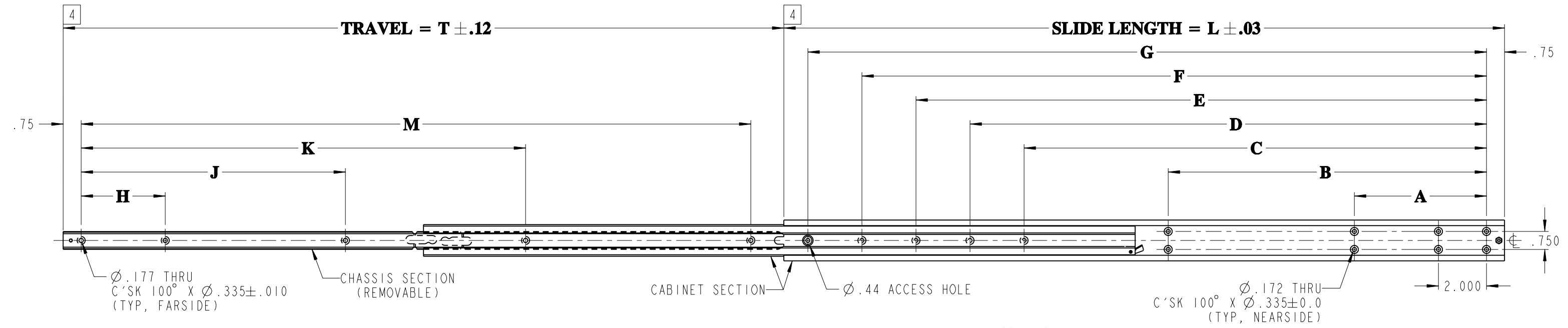
E

E

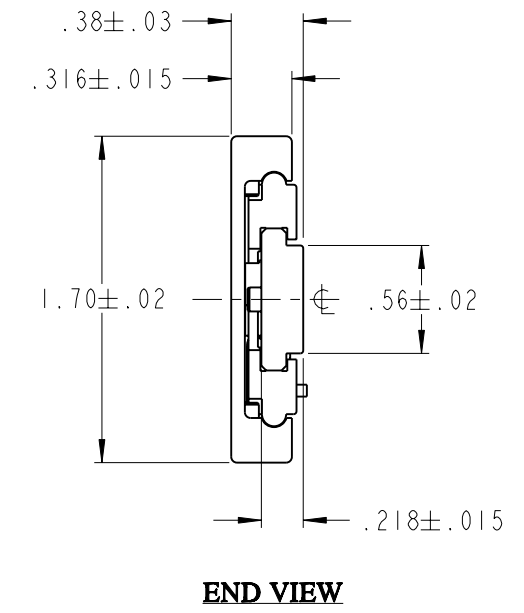
LOCK MECHANISM QUICK DISCONNECT MECHANISM

TRAVEL = T ±.12

SLIDE LENGTH = L ±.03



- 6. SLIDE SHOWN TO BE USED AS LEFT HAND SLIDE, WHEN USE AS A RIGHT HAND SLIDE REAR LOCK WILL BE ON TOP SIDE.
- 5. THIS SLIDE IS A FRICTION SLIDE.
- 4 FOR REFERENCE PURPOSE ONLY, THESE SURFACES TO ALIGN WHEN SLIDE IS IN CLOSED POSITION.
- 3. SLIDE LOCKS IN OPEN POSITION ONLY AND IS PROVIDED WITH QUICK DISCONNECT OF CHASSIS SECTION.
- 2. FINISH: SLIDE INTERM. CHANNELS ARE ANODIZED PER MIL-A-8625, TYPE II, CLASS 2, DYED BLACK AND DRY FILM LUBRICATED PER MIL-PRF-46010 T1. OUTER/ INNER CHANNELS AND ALUMINUM COMPONENTS ARE ANODIZED PER MIL-A-8625, TYPE II, CLASS I. CRES COMPONENTS ARE PASSIVATED PER SAE-AMS-QQ-P-35.
- 1. MATERIAL: SLIDE CHANNELS ARE FABRICATED FROM ALUMINUM ALLOY 6061-T6. COMPONENT PARTS ARE 302/303 CRES AND HIGH STRENGTH ALUMINUM.



PART NO.	SLIDE LENGTH	SLIDE TRAVEL	CABINET SECTION							CHASSIS SECTION				LOAD RATING PER PAIR
			L	T	A	B	C	D	E	F	G	H	J	
515QD-10	10.00	10.00	4.000	-	6.000	-	-	-	8.250	2.500	-	-	7.875	135 LBS
515QD-12	12.00	12.00	4.000	-	8.000	-	-	-	10.250	3.500	-	-	9.875	130 LBS
515QD-14	14.00	14.00	5.500	-	10.000	-	-	-	12.250	3.500	-	9.000	11.875	125 LBS
515QD-16	16.00	16.00	5.500	-	9.750	12.000	-	-	14.250	3.500	-	10.000	13.875	120 LBS
515QD-18	18.00	18.00	5.500	-	9.500	11.750	14.000	-	16.250	3.500	6.000	12.500	15.875	115 LBS
515QD-20	20.00	20.00	5.500	-	11.500	13.750	16.000	-	18.250	3.500	7.000	13.500	17.875	110 LBS
515QD-22	22.00	22.00	5.500	-	13.500	15.750	18.000	-	20.250	3.500	8.000	14.500	19.875	105 LBS
515QD-24	24.00	24.00	5.500	-	13.250	15.500	17.750	20.000	22.250	3.500	9.000	15.500	21.875	100 LBS
515QD-26	26.00	26.00	5.500	10.250	15.250	17.500	19.750	22.000	24.250	3.500	10.000	16.500	23.875	95 LBS
515QD-28	28.00	28.00	5.500	12.250	17.250	19.500	21.750	24.000	26.250	3.500	10.000	17.500	25.875	90 LBS
515QD-30	30.00	30.00	5.500	13.250	19.250	21.500	23.750	26.000	28.250	3.500	11.000	18.500	27.875	80 LBS

JONATHAN
Engineered Solutions

Irvine Technology Center
410 Exchange, Suite 200
Irvine, CA 92602
Tel. (714) 665-4400
Fax: (714) 368-7002
Website: www.jonathanengr.com
Engineer - Production - Integration/ Subassembly - Logistics
United States - Mexico - China - Taiwan

TOLERANCES UNLESS OTHERWISE NOTED				PART NUMBER : 515QD		DESCRIPTION : ALUMINUM SERIES 515QD LOAD RATING : 80-135 LBS.
.XX	.XXX	ANGLES	HOLES	DATE : 05/13/09		
± .01	± .005	± 1°	± .005			
SHEET 1 OF 1				COPYRIGHT © 2009 JONATHAN ENGINEERED SOLUTIONS		

1

2

3

4

5