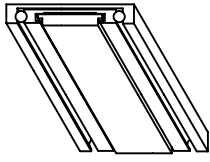
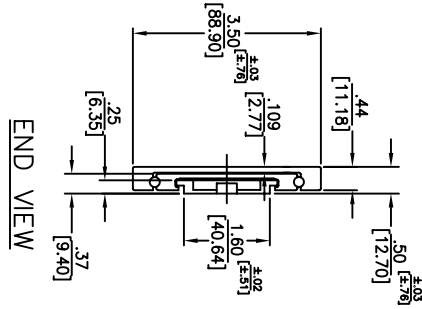


NOTES:

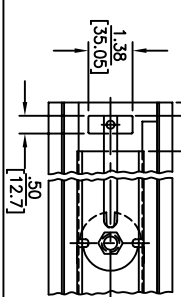
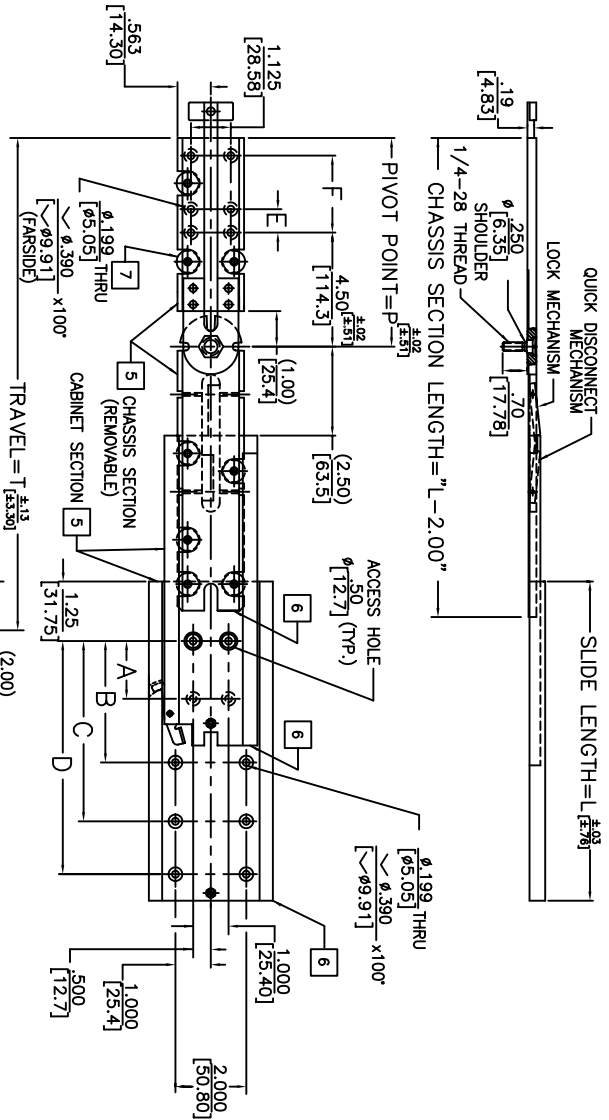
- 1 LEFT SLIDE AS SHOWN, RIGHT SLIDE OPPOSITE.
- 2 SLIDE LOCKS IN OPEN POSITION ONLY.
- 3 FOR BRACKETS, SEE SEPARATE SECTION.
- 4 SLIDE FEATURES QUICK DISCONNECT OF CHASSIS SECTION AND 90° PIVOT POSITION. ALSO AVAILABLE WITH 445° PIVOT.
- 5 CABINET SECTION OR CHASSIS SECTION MAY BE PURCHASED SEPARATELY AND ARE INTERCHANGEABLE. CONTACT JONATHAN FOR ORDERING INSTRUCTIONS.
- 6 ALL MEMBERS FLUSH AT REAR OF SLIDE IN CLOSED POSITION.
- 7 AMOUNT OF ROLLERS TO BE DETERMINED BY JONATHAN ENGINEERED SOLUTIONS.
- 8 MOUNTING HOLE TOLERANCE: $\pm .13$



ISOMETRIC REPRESENTATION



PART NO.	SERIES	SLIDE DIM.		PIVOT DIM.		MOUNTING HOLE PATTERN						LOAD RATING
		L	T	P	A	B	C	D	E	F	PER PAIR	
150QDP-14	14	15	5	127	8	12	203.2	304.8	1	225 LBS		
150QDP-16	16	17	6	152.4	9	14	207	317.5	1	207 LBS		
150QDP-18	18	19	7	177.8	10	16	212.7	355.6	2	185 LBS		
150QDP-20	20	21	8	203.2	11	18	218.4	406.4	3	170 LBS		
150QDP-22	22	23	9	227.8	12	20	224.1	457.2	4	160 LBS		
150QDP-24	24	25	10	252.4	13	22	230.0	508	5	154 LBS		
150QDP-26	26	27	11	277.8	14	24	236.0	558.8	6	149 LBS		
150QDP-28	28	29	12	302.4	15	26	242.0	609.6	7	145 LBS		
150QDP-30	30	31	13	327.8	16	28	248.0	660.4	8	142 LBS		
150QDP-32	32	33	14	352.4	17	30	254.0	711.2	9	137 LBS		
150QDP-34	34	35	15	377.8	18	32	260.0	762	10	132 LBS		
150QDP-36	36	37	16	402.4	19	34	266.0	812.8	11	126 LBS		



Irvine Technology Center
410 Exchange, Suite 200
Irvine, CA 92602
Tel: (714) 665-4400
Website: www.jonathanengr.com
Engineering • Production • Integration • Subassembly • Logistics
United States • Mexico • China • Taiwan

DIMENSIONS SHOWN UNLESS OTHERWISE NOTED		PART NO.		DESCRIPTION:	
AS: INL	[MM]	150QDP	ALUMINUM		
TOLERANCE	±.010	SERIES	150QDP		
XX	±.010	LOAD RATING:	126-225 LBS. / 57-102 KG.		
X	±.013	DATE:	6/04		
XXX	±.005				
XX	±.13				
ANGLES	±1°	COPYRIGHT © 2004 JONATHAN ENGINEERED SOLUTIONS			