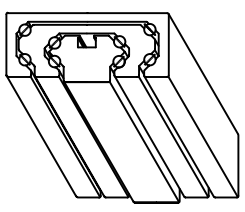
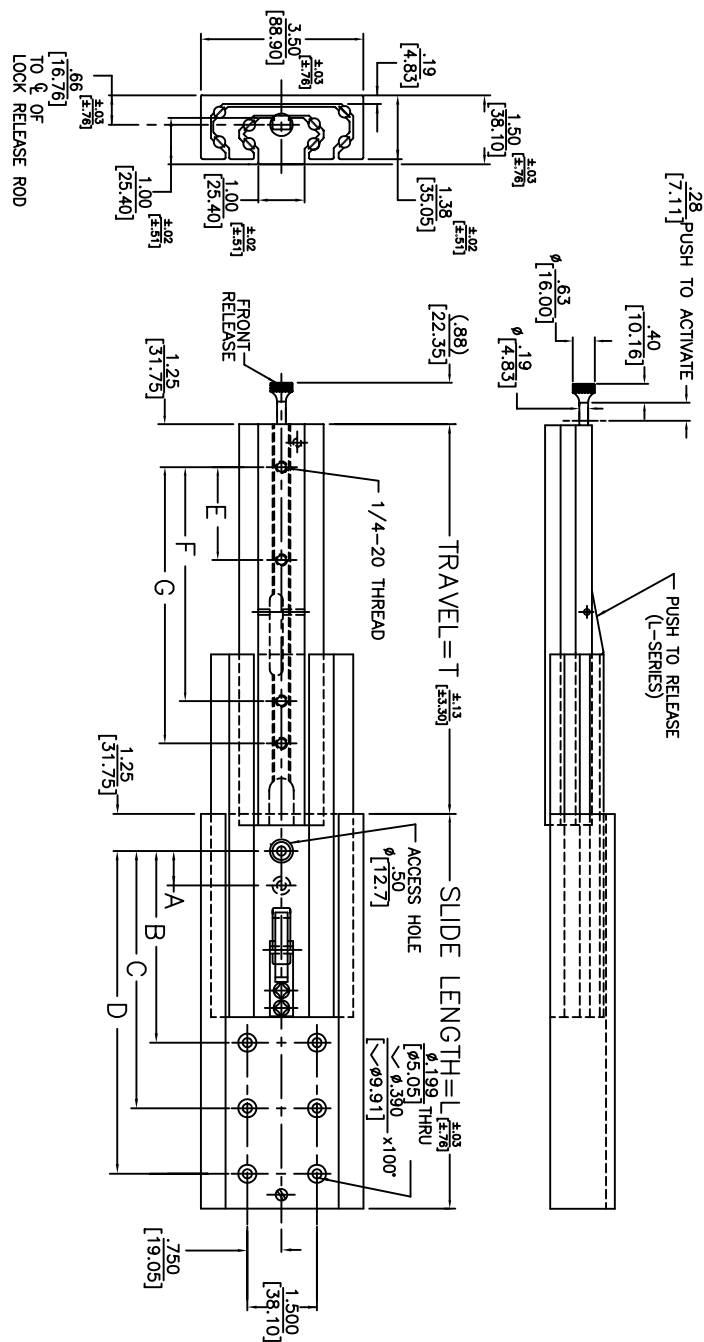


- NOTES:**
1. SLIDE IS SYMMETRICAL. MAY BE USED AS LEFT OR RIGHT HAND SLIDE.
 2. MOUNTING HOLE TOLERANCE: $\pm .005$
[$\pm .13$]
- ORDERING INFO:**
- 300-LENGTH (SLIDE WITHOUT LOCK)
300L-LENGTH (SLIDE WITH LOCK OPEN)
300LR-LENGTH (SLIDE WITH LOCK OPEN & FRONT RELEASE)
* WHEN USED AS PAIRS, DOUBLE LOAD RATING.



ISOMETRIC REPRESENTATION



END VIEW

PART NO.	SLIDE LENGTH	SLIDE TRAVEL	MOUNTING HOLE	PATTERN	LOAD RATING
SERIES	DIM. L	DIM. T	OUTER MEMBER A B C D	INNER MEMBER E F G	* EACH
-14	355.6	330.2	7 11	7 11	259 LBS
-16	406.4	381	8 11	8 11	177.8 279.4
-18	457.2	431.8	9 13	9 13	280 LBS
-20	508	482.6	10 15	10 15	355.6 533.4
-22	558.8	533.4	11 17	11 17	429.6 607.2
-24	609.6	584.2	12 19	12 19	503.8 687.4
-26	660.4	635	13 21	13 21	578 757.2
-28	711.2	685.8	14 22	14 22	652.2 831.6
-30	762	736.6	15 23	15 23	726.4 906
-32	812.8	787.4	16 24	16 24	800.6 980.4
-34	863.6	838.2	17 25	17 25	874.8 1054.8
-36	914.4	889	18 26	18 26	949 1129.2

Jonathan Engineering Solutions

Irvine Technology Center
410 Exchange, Suite 200
Irvine, CA 92602
Tel: (714) 665-4400

Website: www.jonathanengr.com
Engineering • Production • Integration • Subassembly • Logistics
United States • Mexico • China • Taiwan

DIMENSIONS SHOWN AS: IN. [MM]		PART NO.	DESCRIPTION:
TOLERANCE UNLESS OTHERWISE NOTED		300	ALUMINUM
XX	$\pm .010$		SERIES 300 (UNDERMOUNT)
X	$\pm .015$	DATE:	LOAD RATING: 205-261 LBS. / 92-118 KG.
XXX	$\pm .005$	6/04	
XX	$\pm .13$		
ANGLES	$\pm 1^\circ$		

COPYRIGHT © 2004 JONATHAN ENGINEERED SOLUTIONS