

A

A

B

B

C

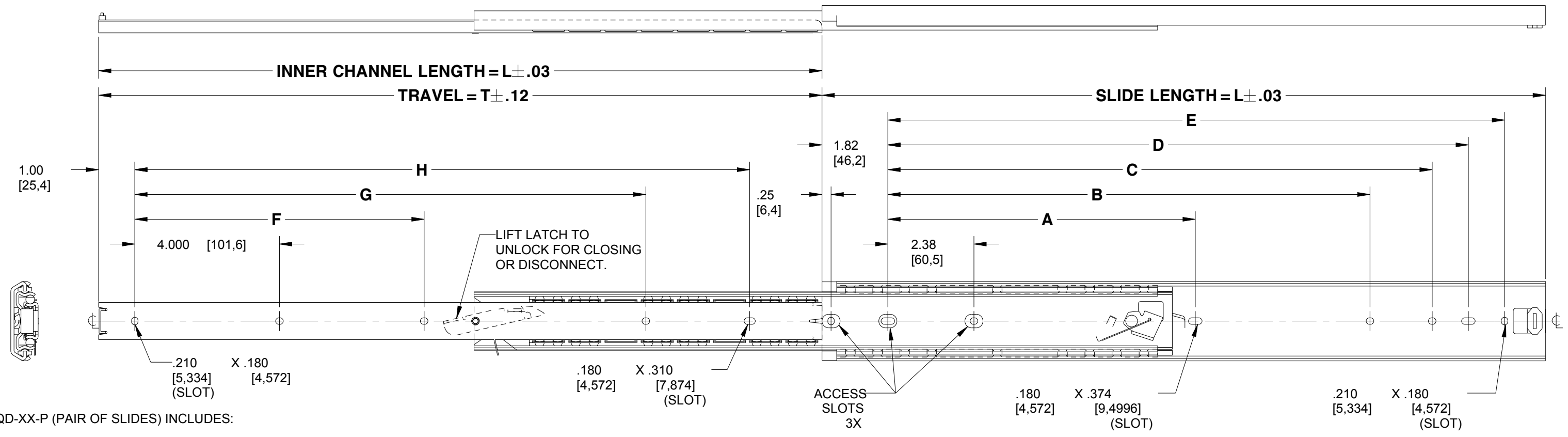
C

D

D

E

E



4. 475QD-XX-P (PAIR OF SLIDES) INCLUDES:

- 1 EA. 475QD-XX-L (LEFT HAND SLIDE SHOWN)
- 1 EA. 475QD-XX-R (RIGHT HAND SLIDE OPPOSITE)

3. LUBRICATION: EXTREME PRESSURE, HI-LOW TEMPERATURE POLYMER GREASE.

2. FINISH: COMMERCIAL CLEAR ZINC PLATING
RoHS COMPLIANT.

1. MATERIAL: SLIDE MEMBERS ARE MADE FROM COLD ROLLED STEEL.

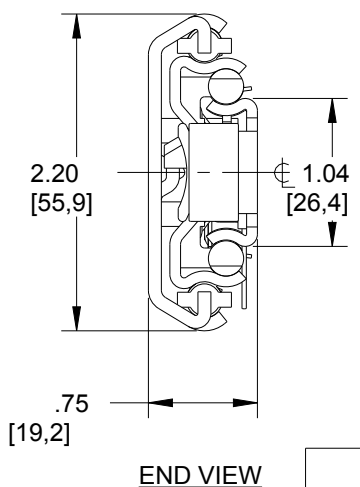
8. DIMENSIONS SHOWN IN INCHES AND [MILLIMETERS].

7. HOLES IN ADDITION TO THOSE SHOWN MAY BE IN THE SLIDE MEMBERS AT JONATHAN'S OPTION.

6. 475QD SLIDE IS PROVIDED WITH LOCK-OPEN FEATURE, AND QUICK DISCONNECT OF INNER SLIDE MEMBER.

5. USE #8 PAN HEAD SCREWS FOR MOUNTING THROUGH THE SLIDE MEMBERS.

PART NUMBER	SLIDE LENGTH	SLIDE TRAVEL	OUTER CHANNEL					INNER CHANNEL			LOAD RATING PER PAIR Lb/[Kg]
	L	T	A	B	C	D	E	F	G	H	
475QD-12	12.00 [305]	12.00 [305]	-	5.330 [135.4]	7.050 [179.1]	8.050 [204.5]	9.050 [229.9]	-	-	9.000 [228.6]	255 [116]
475QD-14	14.00 [356]	14.00 [356]	-	7.330 [186.2]	9.050 [229.9]	10.050 [255.3]	11.050 [280.7]	-	-	11.000 [279.4]	248 [112]
475QD-16	16.00 [406]	16.00 [406]	-	9.330 [237.0]	11.050 [280.7]	12.050 [306.1]	13.050 [331.5]	-	10.130 [257.3]	13.000 [330.2]	241 [109]
475QD-18	18.00 [457]	18.00 [457]	-	11.330 [287.8]	13.050 [331.5]	14.050 [356.9]	15.050 [382.3]	-	12.130 [308.1]	15.000 [381.0]	234 [106]
475QD-20	20.00 [508]	20.00 [508]	8.500 [215.9]	13.33 [338.6]	15.050 [382.3]	16.050 [407.7]	17.050 [433.1]	8.000 [203.2]	14.130 [358.9]	17.000 [431.8]	225 [102]
475QD-22	22.00 [559]	22.00 [559]	9.500 [241.3]	15.33 [389.4]	17.050 [433.1]	18.050 [458.5]	19.050 [483.9]	9.000 [228.6]	16.130 [409.7]	19.000 [482.6]	215 [98]
475QD-24	24.00 [610]	24.00 [610]	10.500 [266.7]	17.33 [440.2]	19.050 [483.9]	20.050 [509.3]	21.050 [534.7]	10.000 [254.0]	18.130 [460.5]	21.000 [533.4]	203 [92]
475QD-26	26.00 [660]	26.00 [660]	11.500 [292.1]	19.33 [491.0]	21.050 [534.7]	22.050 [560.1]	23.050 [585.5]	11.000 [279.4]	20.130 [511.3]	23.000 [584.2]	188 [85]
475QD-28	28.00 [711]	28.00 [711]	12.500 [317.5]	21.33 [541.8]	23.050 [585.5]	24.050 [610.9]	25.050 [636.3]	12.000 [304.8]	22.130 [562.1]	25.000 [635.0]	169 [77]
475QD-30	30.00 [762]	30.00 [762]	13.500 [342.9]	23.330 [592.6]	25.050 [636.3]	26.050 [661.7]	27.050 [687.1]	13.000 [330.2]	24.130 [612.9]	27.000 [685.8]	156 [71]



END VIEW

BRACKET KITS

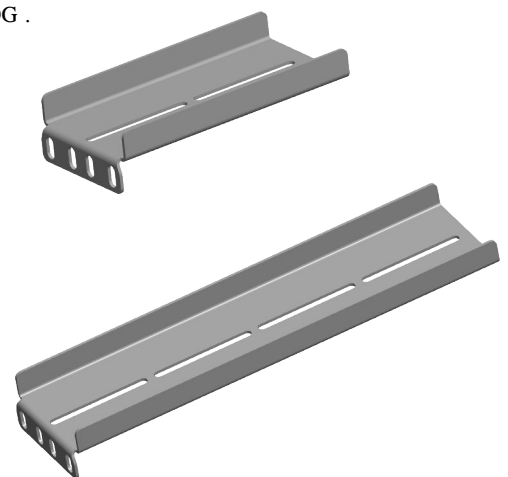
BRACKET KITS ARE SOLD SEPARATELY, IN BRACKET SECTION OF CATALOG .

BK-591 BRACKET KIT INCLUDES:

- 4 EA. 24900495-1 MOUNTING BRACKET
- 8 EA. SCREW-PH/PH #8-32 X .44
- 8 EA. LOCK NUT #8-32

BK-591-E EXTENDED BRACKET KIT INCLUDES:

- 2 EA. 24900495-1 MOUNTING BRACKET
- 2 EA. 24900495-2 EXTENDED MOUNTING BRACKET
- 8 EA. SCREW-PH/PH #8-32 X .44
- 8 EA. LOCK NUT #8-32



SCALE 0.281
Irvine Technology Center
410 Exchange, Suite 200
Irvine, CA 92602
Tel. (714) 665-4400
Fax: (714) 368-7002
Website: www.jonathanenr.com
Engineer - Production - Integration/ Subassembly - Logistics
United States - Mexico - China - Taiwan

TOLERANCES UNLESS OTHERWISE NOTED				PART NUMBER : 475QD		DESCRIPTION : STEEL SERIES 475QD LOAD RATING : 156-255 Lbs / 71-116 Kg.
.XX	.XXX	ANGLES	HOLES	DATE : 05/10/17		
± .03	± .010	± 1°	± .005	SHEET 1 OF 1		COPYRIGHT © 2012 JONATHAN ENGINEERED SOLUTIONS