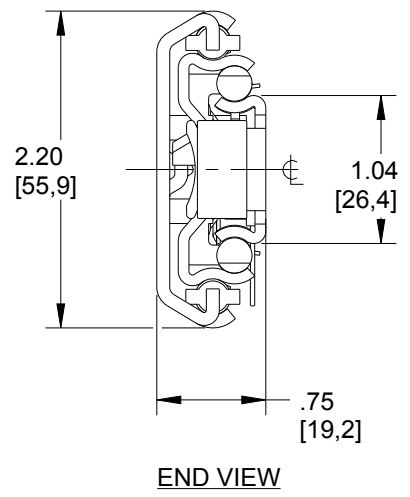


8. DIMENSIONS SHOWN IN INCHES AND [MILLIMETERS].
7. HOLES OTHER THAN THOSE SHOWN MAY BE IN THE SLIDE MEMBERS AT JONATHAN'S OPTION.
6. 475QD-SS SLIDE IS PROVIDED WITH LOCK-OPEN FEATURE, AND QUICK DISCONNECT OF THE INNER SLIDE MEMBER.
5. USE #8 PAN HEAD SCREWS FOR MOUNTING THROUGH THE SLIDE MEMBERS.
4. 475QD-SS-XX-P (PAIR OF SLIDES) INCLUDES:
- 1 EA. 475QD-SS-XX-L (LEFT HAND SLIDE SHOWN)
  - 1 EA. 475QD-SS-XX-R (RIGHT HAND SLIDE OPPOSITE)
3. LUBRICATION: EXTREME PRESSURE, HI-LOW TEMPERATURE POLYMER GREASE.
2. FINISH: PASSIVATE.
1. MATERIAL: STAINLESS STEEL, TYPE 300.

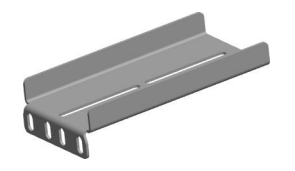


**BRACKET KITS**

BRACKET KITS ARE SOLD SEPARATELY, IN BRACKET SECTION OF CATALOG .

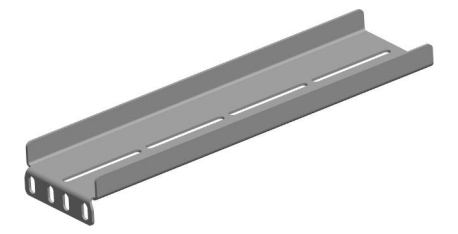
**BK-591-SS** BRACKET KIT INCLUDES:

- 4 EA. 24900495-1-SS MOUNTING BRACKET-STAINLESS
- 8 EA. SCREW-PH/PH #8-32 X .44 STAINLESS
- 8 EA. LOCK NUT #8-32 STAINLESS



**BK-591-E-SS** EXTENDED BRACKET KIT INCLUDES:

- 2 EA. 24900495-1-SS MOUNTING BRACKET-STAINLESS
- 2 EA. 24900495-2-SS EXTENDED MOUNTING BRACKET-STAINLESS
- 8 EA. SCREW-PH/PH #8-32 X .44 STAINLESS
- 8 EA. LOCK NUT #8-32 STAINLESS



PART NUMBER	SLIDE LENGTH	SLIDE TRAVEL	OUTER CHANNEL					INNER CHANNEL			LOAD RATING PER PAIR Lb/[Kg]
	L	T	A	B	C	D	E	F	G	H	
475QD-SS-12	12.00 [305]	12.00 [305]	-	5.330 [135.4]	7.050 [179.1]	8.050 [204.5]	9.050 [229.9]	-	-	9.000 [228.6]	320 [145]
475QD-SS-14	14.00 [356]	14.00 [356]	-	7.330 [186.2]	9.050 [229.9]	10.050 [255.3]	11.050 [280.7]	-	-	11.000 [279.4]	310 [140]
475QD-SS-16	16.00 [406]	16.00 [406]	-	9.330 [237.0]	11.050 [280.7]	12.050 [306.1]	13.050 [331.5]	-	10.130 [257.3]	13.000 [330.2]	300 [136]
475QD-SS-18	18.00 [457]	18.00 [457]	-	11.330 [287.8]	13.050 [331.5]	14.050 [356.9]	15.050 [382.3]	-	12.130 [308.1]	15.000 [381.0]	290 [132]
475QD-SS-20	20.00 [508]	20.00 [508]	8.500 [215.9]	13.330 [338.6]	15.050 [382.3]	16.050 [407.7]	17.050 [433.1]	8.000 [203.2]	14.130 [358.9]	17.000 [431.8]	280 [127]
475QD-SS-22	22.00 [559]	22.00 [559]	9.500 [241.3]	15.330 [389.4]	17.050 [433.1]	18.050 [458.5]	19.050 [483.9]	9.000 [228.6]	16.130 [409.7]	19.000 [482.6]	270 [122]
475QD-SS-24	24.00 [610]	24.00 [610]	10.500 [266.7]	17.330 [440.2]	19.050 [483.9]	20.050 [509.3]	21.050 [534.7]	10.000 [254.0]	18.130 [460.5]	21.000 [533.4]	250 [113]
475QD-SS-26	26.00 [660]	26.00 [660]	11.500 [292.1]	19.330 [491.0]	21.050 [534.7]	22.050 [560.1]	23.050 [585.5]	11.000 [279.4]	20.130 [511.3]	23.000 [584.2]	235 [107]
475QD-SS-28	28.00 [711]	28.00 [711]	12.500 [317.5]	21.330 [541.8]	23.050 [585.5]	24.050 [610.9]	25.050 [636.3]	12.000 [304.8]	22.130 [562.1]	25.000 [635.0]	210 [95]
475QD-SS-30	30.00 [762]	30.00 [762]	13.500 [342.9]	23.330 [592.6]	25.050 [636.3]	26.050 [661.7]	27.050 [687.1]	13.000 [330.2]	24.130 [612.9]	27.000 [685.8]	195 [88]

**JONATHAN**  
Engineered Solutions

Irvine Technology Center  
410 Exchange, Suite 200  
Irvine, CA 92602  
Tel. (714) 665-4400  
Fax: (714) 368-7002  
Website: www.jonathanengr.com  
Engineer - Production - Integration/ Subassembly - Logistics  
United States - Mexico - China - Taiwan

TOLERANCES UNLESS OTHERWISE NOTED				PART NUMBER : <b>475QD-SS</b>		DESCRIPTION : <b>STAINLESS STEEL SERIES 475QD-SS</b>	
.XX	.XXX	ANGLES	HOLES	DATE : 05/10/17		<b>LOAD RATING: 195-320 Lbs / 88-145 Kg.</b>	
± .03	± .010	± 1°	± .005	SHEET 1 OF 1		COPYRIGHT © 2012 JONATHAN ENGINEERED SOLUTIONS	