

1

2

3

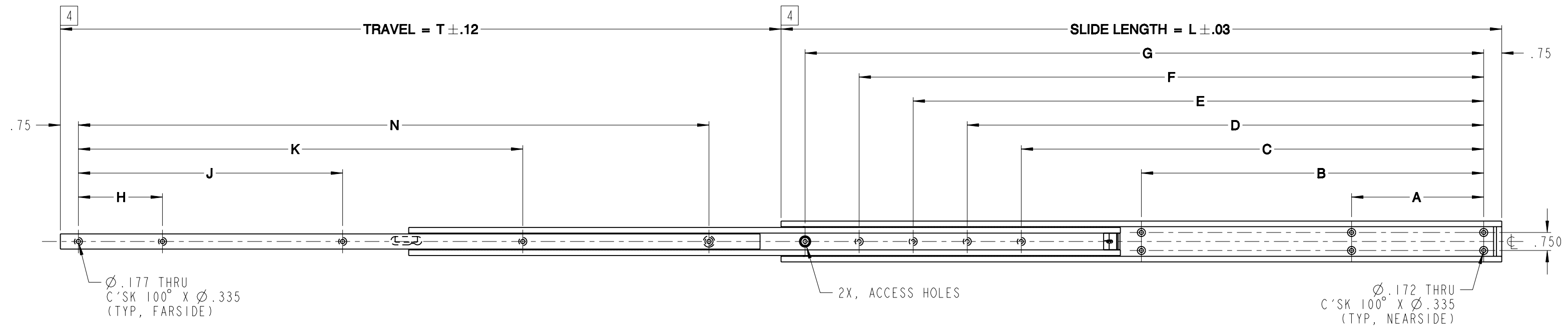
4

5

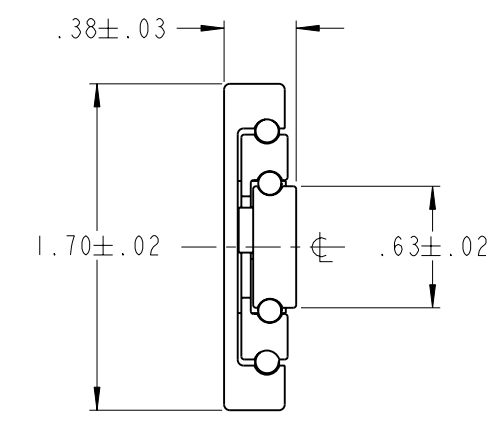
LOCK MECHANISM
(PRESS TO CLOSE)

TRAVEL = T ±.12

SLIDE LENGTH = L ±.03



- 5. SLIDE IS SYMMETRICAL, MAY BE USED AS LEFT-HAND OR RIGHT-HAND MOUNTING UNIT.
- 4 FOR REFERENCE PURPOSE ONLY, THESE SURFACES TO ALIGN WHEN SLIDE IS IN CLOSED POSITION.
- 3. SLIDE LOCKS IN FULL OPEN POSITION.
- 2. FINISH: SLIDE CHANNELS AND ALUMINUM COMPONENTS ARE ANODIZED PER MIL-A-8625, TYPE II, CLASS I. CRES COMPONENTS ARE PASSIVATED PER SAE-AMS-QQ-P-35.
- 1. MATERIAL: SLIDE CHANNELS ARE FABRICATED FROM ALUMINUM ALLOY 7075-T6. COMPONENT PARTS ARE 302/303 CRES AND HIGH STRENGTH ALUMINUM. BALL BEARINGS ARE 440 CRES.



END VIEW

PART NO.	SLIDE LENGTH	SLIDE TRAVEL	CABINET SECTION										LOAD RATING PER PAIR	
			A	B	C	D	E	F	G	H	J	K		N
170FB-10	10	10	4.000	-	6.000	-	-	-	8.250	2.500	-	-	6.750	140 lbs
170FB-12	12	12	4.000	-	8.000	-	-	-	10.250	3.500	-	-	8.250	135 lbs
170FB-14	14	14	5.500	-	10.000	-	-	-	12.250	3.500	-	9.000	10.250	130 lbs
170FB-16	16	16	5.500	-	9.750	12.000	-	-	14.250	3.500	-	10.000	12.250	125 lbs
170FB-18	18	18	5.500	-	9.500	11.750	14.000	-	16.250	3.500	6.000	12.500	14.250	120 lbs
170FB-20	20	20	5.500	-	11.500	13.750	16.000	-	18.250	3.500	7.000	13.500	16.250	115 lbs
170FB-22	22	22	5.500	-	13.500	15.750	18.000	-	20.250	3.500	8.000	14.500	18.250	110 lbs
170FB-24	24	24	5.500	-	13.250	15.500	17.750	20.000	22.250	3.500	9.000	15.500	20.250	105 lbs
170FB-26	26	26	5.500	11.250	15.250	17.500	19.750	22.000	24.250	3.500	10.000	16.500	22.250	100 lbs
170FB-28	28	28	5.500	13.250	17.250	19.500	21.750	24.000	26.250	3.500	10.000	17.500	24.250	95 lbs
170FB-30	30	30	5.500	14.250	19.250	21.500	23.750	26.000	28.250	3.500	11.000	18.500	26.250	85 lbs



Irvine Technology Center
 410 Exchange, Suite 200
 Irvine, CA 92602
 Tel. (714) 665-4400
 Fax: (714) 368-7002
 Website: www.jonathanengr.com
 Engineer - Production - Integration/ Subassembly - Logistics
 United States - Mexico - China - Taiwan

TOLERANCES UNLESS OTHERWISE NOTED				PART NUMBER : 170FB		DESCRIPTION : ALUMINUM 170FB LOAD RATING : 85-140 lbs
.XX		.XXX		DATE : 06/01/09		
± .01		± .005		± 1°		
SHEET 1 OF 1				COPYRIGHT © 2009 JONATHAN ENGINEERED SOLUTIONS		

1

2

3

4

5