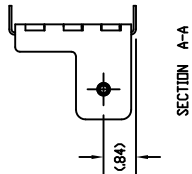
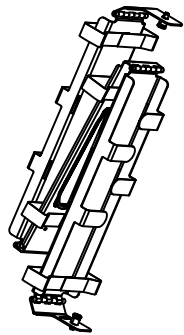
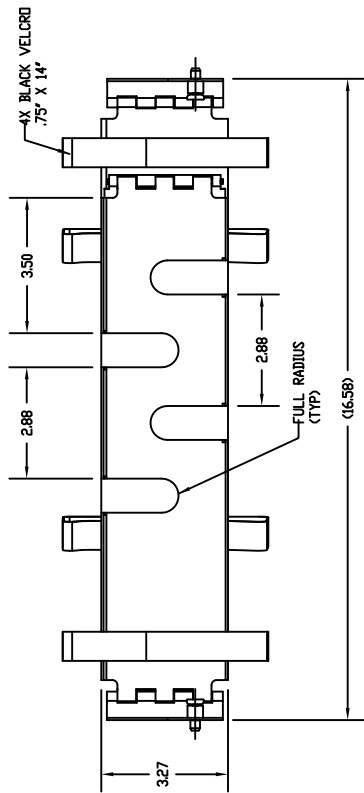
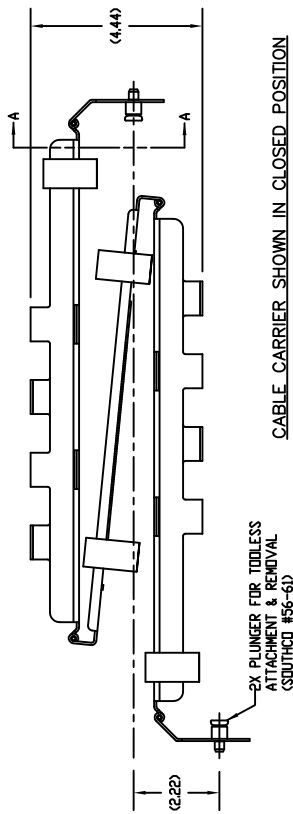


2. THIS PART TO BE ROHS COMPLIANT.

1. MATERIAL & FINISH: 060" THICK STEEL, LOW CARBON COMMERCIAL QUALITY ELECTRO-GALVANIZED WITH HEXAVALENT CHROMIUM-FREE CHEMICAL TREATMENT, CLASS B (ASTM A593).



Irvine Technology Center
410 Exchange, Suite 200
Irvine, CA 92602
Tel: (714) 665-4400
Website: www.JonathanEngr.com
Engineering • Production • Integration • Subassembly • Logistics
United States • Mexico • China • Taiwan

DESCRIPTION:

PART NO.
MCR-1022

CABLE MANAGEMENT
SERIES MCR-1022

DATE:
1/11

DIMENSIONS SHOWN	
AS:	[MM]
	UNLESS OTHERWISE NOTED
.XX	±.030
.X	[±.8]
.XXX	±.010
.XX	[±.3]
ANGLES	±1°

COPYRIGHT © 2011 JONATHAN ENGINEERED SOLUTIONS

1 2 3 4 5 6

A B C D

A B C D

1 2 3 4 5 6