

1

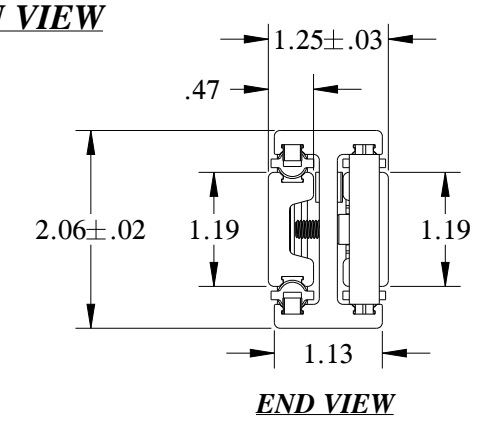
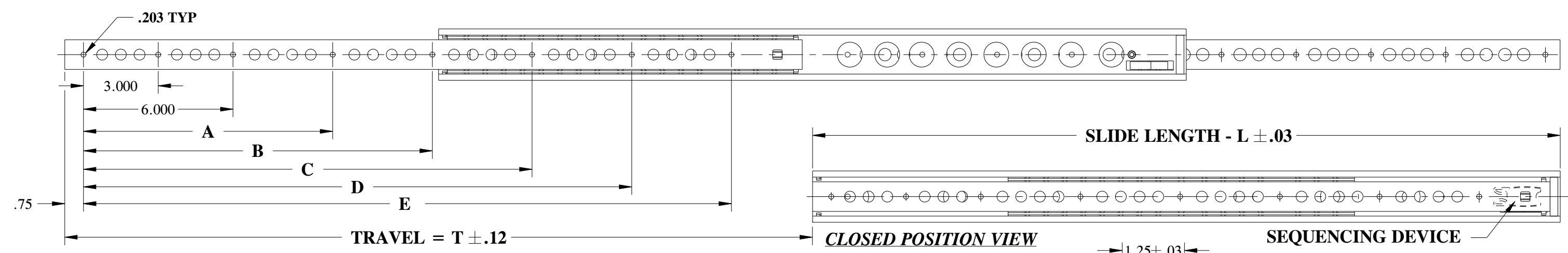
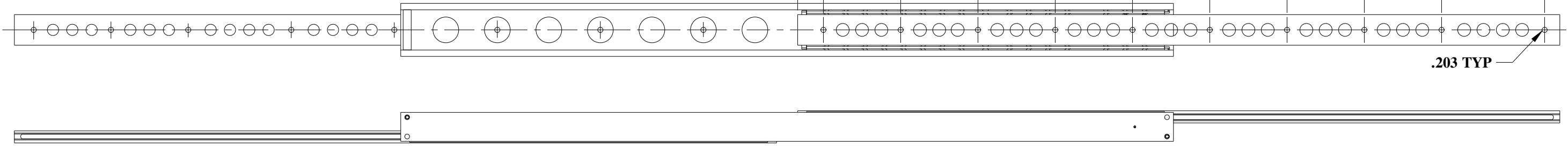
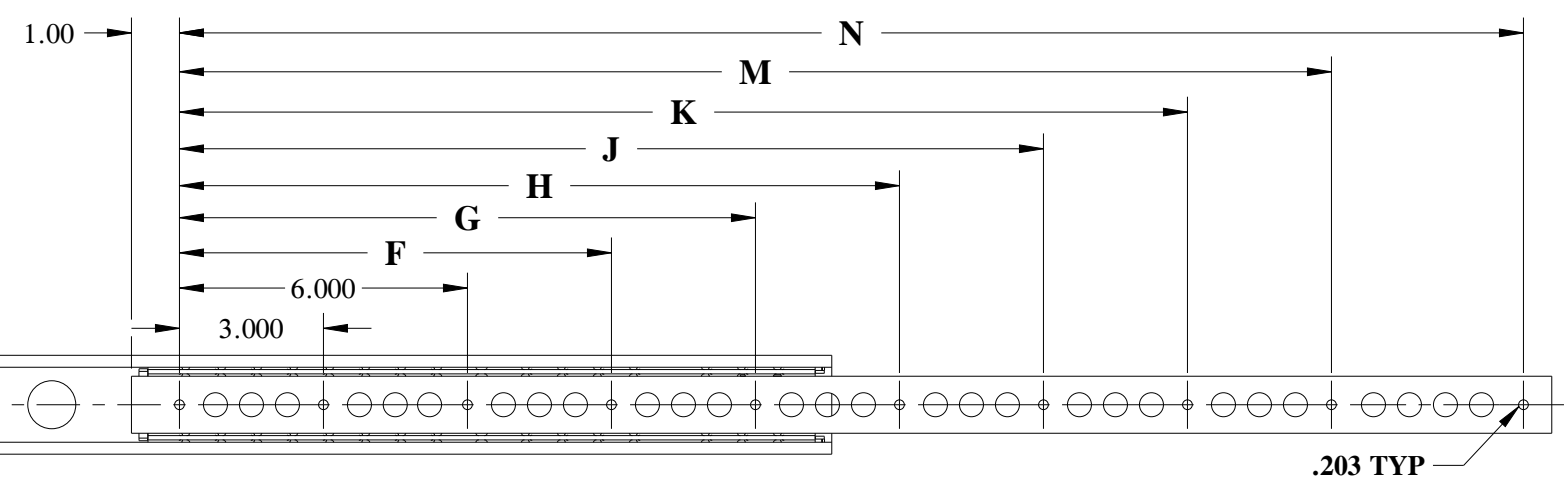
2

3

4

5

- 1. MATERIAL: CHANNELS: HIGH STRENGTH ALUMINUM ALLOY, TENSILE STRENGTH OF 35,000 PSI MIN. DYNA RACEWAYS, STOP PINS, COMPONENTS: STAINLESS STEEL. RUBBER BUMPERS AND PLASTIC SEQUENCING DEVICE.
- 2. FINISH: ALUMINUM - ANODIZED. STAINLESS STEEL - PASSIVATED.
- 3. USE #10 PAN OR BINDING HEAD SCREWS FOR MOUNTING THROUGH THE SLIDE MEMBERS.
- 4. SLIDE OFFERS A SEQUENCING DEVICE, SEE ORDERING INFORMATION BELOW .



ORDERING INFORMATION

SR350S-XX-P

SEAT RAIL 350 SERIES PAIR OF SLIDES (BLANK FOR SINGLE)
 SEQUENCING DEVICE (BLANK IF NONE) SLIDE LENGTH

PART NUMBER	SLIDE LENGTH	TRAVEL	MOUNTING HOLE PATTERN												SLIDE WEIGHT (LBS/EACH)	LOAD RATING (LBS/PAIR)	
			A	B	C	D	E	F	G	H	J	K	M	N			
SR350-10	10.00	10.00	-	-	-	-	-	-	-	-	-	-	-	-	8.000	1.9 LBS	300
SR350-12	12.00	12.00	-	-	-	-	8.000	-	-	-	-	-	-	-	10.000	2.3 LBS	400
SR350-14	14.00	14.00	-	-	-	-	10.000	9.000	-	-	-	-	-	-	12.000	2.7 LBS	500
SR350-16	16.00	16.00	10.000	-	-	-	12.000	9.000	12.000	-	-	-	-	-	14.000	3.1 LBS	600
SR350-18	18.00	18.00	10.000	-	-	-	14.000	9.000	12.000	-	-	-	-	-	16.000	3.4 LBS	700
SR350-20	20.00	20.00	10.000	14.000	-	-	16.000	9.000	12.000	15.000	-	-	-	-	18.000	3.8 LBS	700
SR350-22	22.00	22.00	10.000	14.000	18.000	-	18.000	9.000	12.000	15.000	18.000	-	-	-	20.000	4.2 LBS	550
SR350-24	24.00	24.00	10.000	14.000	18.000	-	20.000	9.000	12.000	15.000	18.000	-	-	-	22.000	4.6 LBS	450
SR350-26	26.00	26.00	10.000	14.000	18.000	-	22.000	9.000	12.000	15.000	18.000	21.000	-	-	24.000	5.0 LBS	400
SR350-28	28.00	28.00	10.000	14.000	18.000	22.000	24.000	9.000	12.000	15.000	18.000	21.000	24.000	-	26.000	5.3 LBS	350
SR350-30	30.00	30.00	10.000	14.000	18.000	22.000	26.000	9.000	12.000	15.000	18.000	21.000	24.000	28.000	5.7 LBS	300	



Irvine Technology Center
 250 Commerce, Suite 100
 Irvine, CA 92602
 Tel. (714) 665-4400
 Fax: (714) 368-7002
 Website: www.jonathanengr.com
 Engineer - Production - Integration/ Subassembly - Logistics
 United States - Mexico - China - Taiwan

TOLERANCES UNLESS OTHERWISE NOTED				PART NUMBER : SR350		DESCRIPTION : SR350 SERIES SLIDE DYNA RACEWAYS
				DATE : 01/30/19		
SHEET 1 OF 1				COPYRIGHT © 2012 JONATHAN ENGINEERED SOLUTIONS		

1

2

3

4

5